

CHANGE: RWY DESIGNATOR

**BATOX 1A**

BATOX – TR 247° (RDL 067 ALG VOR) fino a 31NM SME DME (o 89NM ALG TACAN), quindi virare a sinistra su TR 234° (RDL 054 SME VOR) per SME VOR/DME.

MEL/MEA: BATOX – RDL 067/89NM ALG VORTAC (o/or 31NM SME DME): FL 90; RDL 067/89NM ALG VORTAC (o/or 31NM SME DME) – SME VOR/DME: 5000 FT.

**BATOX 1B**

BATOX – TR 247° (RDL 067 ALG VOR) fino a 31NM SME DME (o 89NM ALG TACAN), quindi virare a sinistra su TR 234° (RDL 054 SME VOR) per il punto MILIS.

MEL/MEA: BATOX – RDL 067/89NM ALG VORTAC (o/or 31NM SME DME): FL 90; RDL 067/89NM ALG VORTAC (o/or 31NM SME DME) – MILIS: 4000 FT.

**SUKUN 1A**

SUKUN – TR 293° (RDL 113 SME VOR) – SME VOR/DME.

MEA: SUKUN – SME VOR/DME: 5000 FT.

**SUKUN 2B (A discrezione ATC)**

SUKUN – TR 293° (RDL 113 SME VOR) fino a 19NM SME DME, quindi virare a destra fino ad intercettare e seguire ARC 17NM SME DME. Intercettando RDL 060 SME VOR virare a sinistra fino ad intercettare e seguire RDL 054 SME VOR (TR 234°) per il punto MILIS.

MEA: SUKUN – MILIS: 4000 FT.

**LABOM 1A**

LABOM – TR 007° (RDL 187 SME VOR) – SME VOR.

MEL/MEA: LABOM – RDL 187/15 NM SME VOR/DME: FL 100; RDL 187/15 NM SME VOR/DME – SME VOR: 5000 FT.

**LABOM 2B**

LABOM – TR 007° (RDL 187 SME VOR) fino a 24NM SME DME, quindi virare a sinistra fino ad intercettare e seguire ARC 22NM SME DME. Attraversando RDL 229 SME VOR virare a destra fino ad intercettare e seguire RDL 234 SME VOR (TR 054°) per il punto OBIMI, quindi SENAL.

MEL/MEA: LABOM – RDL 187/24NM SME VOR/DME: FL 100; RDL 187/24NM SME VOR/DME – SENAL: 6000 FT.

**LABOM 2C**

LABOM – TR 007° (RDL 187 SME VOR) fino a 24NM SME DME, quindi virare a sinistra fino ad intercettare e seguire ARC 22NM SME DME. Attraversando RDL 229 SME VOR virare a destra fino ad intercettare e seguire RDL 234 SME VOR (TR 054°) per il punto OBIMI, quindi procedere SENAL – SME VOR/DME.

MEL/MEA: LABOM – RDL 187/24NM SME VOR/DME: FL 100; RDL 187/24NM SME VOR/DME – RDL 234/7NM SME VOR/DME (o/or 7.5NM ISM DME): 6000 FT; RDL 234/7NM SME VOR/DME (o/or 7.5NM ISM DME) – SME VOR/DME: 5000 FT.

**BATOX 1A**

BATOX – TR 247° (RDL 067 ALG VOR) until 31NM SME DME (or 89NM ALG TACAN), then turn left on TR 234° (RDL 054 SME VOR) bound to SME VOR/DME.

**BATOX 1B**

BATOX – TR 247° (RDL 067 ALG VOR) until 31NM SME DME (or 89NM ALG TACAN), then turn left on TR 234° (RDL 054 SME VOR) bound to MILIS point.

**SUKUN 1A**

SUKUN – TR 293° (RDL 113 SME VOR) – SME VOR/DME.

**SUKUN 2B (ATC discretion)**

SUKUN – TR 293° (RDL 113 SME VOR) until 19NM SME DME, then turn right until joining ARC 17NM SME DME. Crossing RDL 060 SME VOR turn left until joining RDL 054 SME VOR (TR 234°) bound to MILIS point.

**LABOM 1A**

LABOM – TR 007° (RDL 187 SME VOR) – SME VOR.

**LABOM 2B**

LABOM – TR 007° (RDL 187 SME VOR) until 24NM SME DME, then turn left until joining ARC 22NM SME DME. Crossing RDL 229 SME VOR turn right until joining RDL 234 SME VOR (TR 054°) bound to OBIMI, then SENAL.

**LABOM 2C**

LABOM – TR 007° (RDL 187 SME VOR) until 24NM SME DME, then turn left until joining ARC 22NM SME DME. Crossing RDL 229 SME VOR turn right until joining RDL 234 SME VOR (TR 054°) bound to OBIMI, then proceed SENAL – SME VOR/DME.

**BOLOT 3A (a discrezione ATC)**

BOLOT – TR 356° (RDL 176 AJO VOR) fino ad attraversare RDL 229 SME VOR, quindi virare a destra fino ad intercettare e seguire RDL 234 SME VOR (TR 054°) per il punto OBIMI, quindi procedere SENAL – SME VOR/DME.

MEL/MEA: BOLOT – RDL 234/30NM SME VOR/DME (o/or 30.5NM ISM DME): FL 80; RDL 234/30NM SME VOR/DME (o/or 30.5NM ISM DME) – RDL 234/7NM SME VOR/DME (o/or 7.5NM ISM DME): 6000 FT; RDL 234/7 NM SME VOR/DME (o/or 7.5NM ISM DME) – SME VOR/DME: 5000 FT.

**BOLOT 2B (a discrezione ATC)**

BOLOT – TR 356° (RDL 176 AJO VOR) fino ad attraversare RDL 229 SME VOR, quindi virare a destra fino ad intercettare e seguire RDL 234 SME VOR (TR 054°) per il punto OBIMI, quindi SENAL.

MEL/MEA: BOLOT – RDL 234/30NM SME VOR/DME (o/or 30.5NM ISM DME): FL 80; RDL 234/30NM SME VOR/DME (o/or 30.5NM ISM DME) – SENAL: 6000 FT.

**MINKA 3A (a discrezione ATC)**

MINKA – TR 176° (RDL 176 AJO VOR) fino ad attraversare RDL 240 SME VOR, quindi virare a sinistra fino ad intercettare e seguire RDL 234 SME VOR (TR 054°) per il punto OBIMI, quindi procedere SENAL – SME VOR/DME.

MEL/MEA: MINKA – RDL 234/30 NM SME VOR/DME (o/or 30.5NM ISM DME): FL 80; RDL 234/30NM SME VOR/DME (o/or 30.5NM ISM DME) – RDL 234/7 NM SME VOR/DME (o/or 7.5NM ISM DME): 6000 FT; RDL 234/7NM SME VOR/DME (o/or 7.5NM ISM DME) – SME VOR/DME: 5000 FT.

**MINKA 2B (a discrezione ATC)**

MINKA – TR 176° (RDL 176 AJO VOR) fino ad attraversare RDL 240 SME VOR, quindi virare a sinistra fino ad intercettare e seguire RDL 234 SME VOR (TR 054°) per il punto OBIMI, quindi SENAL.

MEL/MEA: MINKA – RDL 234/30NM SME VOR/DME (o/or 30.5NM ISM DME): FL 80; RDL 234/30NM SME VOR/DME (o/or 30.5NM ISM DME) – SENAL: 6000 FT.

**MINKA 1C (a discrezione ATC)**

MINKA – TR 081° (RDL 261 SME VOR) – SME VOR/DME.

MEL/MEA: MINKA – RDL 261/7NM SME VOR/DME (o/or 7.4NM ISM DME): FL 80; RDL 261/7NM SME VOR/DME (o/or 7.4NM ISM DME) – SME VOR/DME: 5000 FT.

**POZZO 2A**

POZZO – TR 106° (RDL 286 SME VOR) – SME VOR/DME.

MEL/MEA: POZZO – RDL 286/7NM SME VOR/DME (o/or 7.3NM ISM DME): FL 90; RDL 286/7NM SME VOR/DME (o/or 7.3NM ISM DME) – SME VOR/DME: 5000 FT.

**OLBEK 1A**

OLBEK – TR 214° (RDL 034 SME VOR) – SME VOR/DME.

MEA: OLBEK – SME VOR/DME: 5000 FT.

**OLBEK 1B (a discrezione ATC)**

Sul punto OLBEK virare a sinistra fino ad intercettare e seguire ARC 25NM SME DME. Intercettando RDL 049 SME VOR virare a destra fino ad intercettare e seguire RDL 054 SME VOR (TR 234°) per il punto MILIS.

MEA: OLBEK – MILIS: 4000 FT.

**OLBEK 1C (a discrezione ATC)**

OLBEK – TR 194° – MILIS.

MEA: OLBEK – MILIS: 4000 FT.

**BOLOT 3A (ATC discretion)**

BOLOT – TR 356° (RDL 176 AJO VOR) until crossing RDL 229 SME VOR, then turn right until joining RDL 234 SME VOR (TR 054°) bound to OBIMI, then proceed SENAL – SME VOR/DME.

**BOLOT 2B (ATC discretion)**

BOLOT – TR 356° (RDL 176 AJO VOR) until crossing RDL 229 SME VOR, then turn right until joining RDL 234 SME VOR (TR 054°) bound to OBIMI, then SENAL.

**MINKA 3A (ATC discretion)**

MINKA – TR 176° (RDL176 AJO VOR) until crossing RDL 240 SME VOR, then turn left until joining RDL 234 SME VOR (TR 054°) bound to OBIMI, then proceed SENAL – SME VOR/DME.

**MINKA 2B (ATC discretion)**

MINKA – TR 176° (RDL176 AJO VOR) until crossing RDL 240 SME VOR, then turn left until joining RDL 234 SME VOR (TR 054°) bound to OBIMI, then SENAL.

**MINKA 1C (ATC discretion)**

MINKA – TR 081° (RDL 261 SME VOR) – SME VOR/DME.

**POZZO 2A**

POZZO – TR 106° (RDL 286 SME VOR) – SME VOR/DME.

**OLBEK 1A**

OLBEK – TR 214° (RDL 034 SME VOR) – SME VOR/DME.

**OLBEK 1B (ATC discretion)**

Over OLBEK turn left until joining ARC 25NM SME DME. Crossing RDL 049 SME VOR turn right until joining RDL 054 SME VOR (TR 234°) bound to MILIS point.

**OLBEK 1C (ATC discretion)**

OLBEK – TR 194° – MILIS.

**GITRI 1A**

GITRI – TR 265° (RDL 085 SME VOR) – SME VOR/DME.

**GITRI 1A**

GITRI – TR 265° (RDL 085 SME VOR) – SME VOR/DME.

MEA: GITRI – SME VOR/DME: 5000 FT.

**GITRI 2B (A discrezione ATC)**

GITRI – TR 265° (RDL 085 SME VOR) fino a 19NM SME DME, quindi virare a destra fino ad intercettare e seguire ARC 17NM SME DME. Intercettando RDL 060 SME VOR virare a sinistra fino ad intercettare e seguire RDL 054 SME VOR (TR 234°) per il punto MILIS.

**GITRI 2B (ATC discretion)**

GITRI – TR 265° (RDL 085 SME VOR) until 19NM SME DME, then turn right until joining ARC 17NM SME DME. Crossing RDL 060 SME VOR turn left until joining RDL 054 SME VOR (TR 234°) bound to MILIS.

MEA: GITRI – MILIS: 4000 FT.

**EKROB 1A (a discrezione ATC)**

EKROB – TR 279° (RDL 099 SME VOR) – SME VOR/DME.

**EKROB 1A (ATC discretion)**

EKROB – TR 279° (RDL 099 SME VOR) – SME VOR/DME.

MEA: EKROB – SME VOR/DME: 5000 FT.

**EKROB 1B (a discrezione ATC)**

Sul punto EKROB virare a destra per intercettare e seguire ARC 17 NM SME DME. Intercettando RDL 060 SME VOR virare a sinistra per il punto MILIS.

**EKROB 1B (ATC discretion)**

Over EKROB turn right until joining ARC 17 NM SME DME. Crossing RDL 060 SME VOR turn left bound to MILIS.

MEA: EKROB - ARC 17 NM SME DME - MILIS: 4000 FT.

**VAVAX 1A**

VAVAX – TR 351° (RDL 171 SME VOR) – SME VOR/DME.

**VAVAX 1A**

VAVAX – TR 351° (RDL 171 SME VOR) – SME VOR/DME.

MEA: VAVAX – SME VOR/DME: 5000 FT.

**CORSI 1H**

CORSI – TR 175° (RDL 175 AJO VOR) fino ad attraversare RDL 294 SME VOR, quindi virare a sinistra fino ad intercettare e seguire RDL 291 SME VOR (TR 111°). A 24NM SME DME virare a destra fino ad intercettare e seguire ARC 22NM SME DME. Attraversando RDL 239 SME VOR virare a sinistra fino ad intercettare e seguire RDL 234 SME VOR (TR 054°) per il punto OBIMI, quindi procedere SENAL – SME VOR/DME.

**CORSI 1H**

CORSI – TR 175° (RDL 175 AJO VOR) until crossing RDL 294 SME VOR, then turn left until joining RDL 291 SME VOR (TR 111°). At 24NM SME DME turn right until joining ARC 22NM SME DME. Crossing RDL 239 SME VOR turn left until joining RDL 234 SME VOR (TR 054°) bound to OBIMI, then proceed SENAL – SME VOR/DME.

MEL/MEA: CORSI – RDL 291/24NM SME VOR/DME: FL 90; RDL 291/24NM SME VOR/DME – RDL 234/7NM SME VOR/DME (o/or 7.5NM ISM DME): 6000 FT; RDL 234/7NM SME VOR/DME (o/or 7.5NM ISM DME) - SME VOR/DME: 5000 FT.

**CORSI 1J**

CORSI – TR 175° (RDL 175 AJO VOR) fino ad attraversare RDL 294 SME VOR, quindi virare a sinistra fino ad intercettare e seguire RDL 291 SME VOR (TR 111°). A 24NM SME DME virare a destra fino ad intercettare e seguire ARC 22NM SME DME. Attraversando RDL 239 SME VOR virare a sinistra fino ad intercettare e seguire RDL 234 SME VOR (TR 054°) per il punto OBIMI, quindi SENAL.

**CORSI 1J**

CORSI – TR 175° (RDL 175 AJO VOR) until crossing RDL 294 SME VOR, then turn left until joining RDL 291 SME VOR (TR 111°). At 24NM SME DME turn right until joining ARC 22NM SME DME. Crossing RDL 239 SME VOR turn left until joining RDL 234 SME VOR (TR 054°) bound to OBIMI, then SENAL .

MEA: CORSI – RDL 291/24NM SME VOR/DME: FL 90; RDL 291/24NM SME VOR/DME – SENAL: 6000 FT.

**CORSI 1G (a discrezione ATC)**

CORSI – TR 129° (RDL 309 SME VOR) – SME VOR/DME.

**CORSI 1G (ATC discretion)**

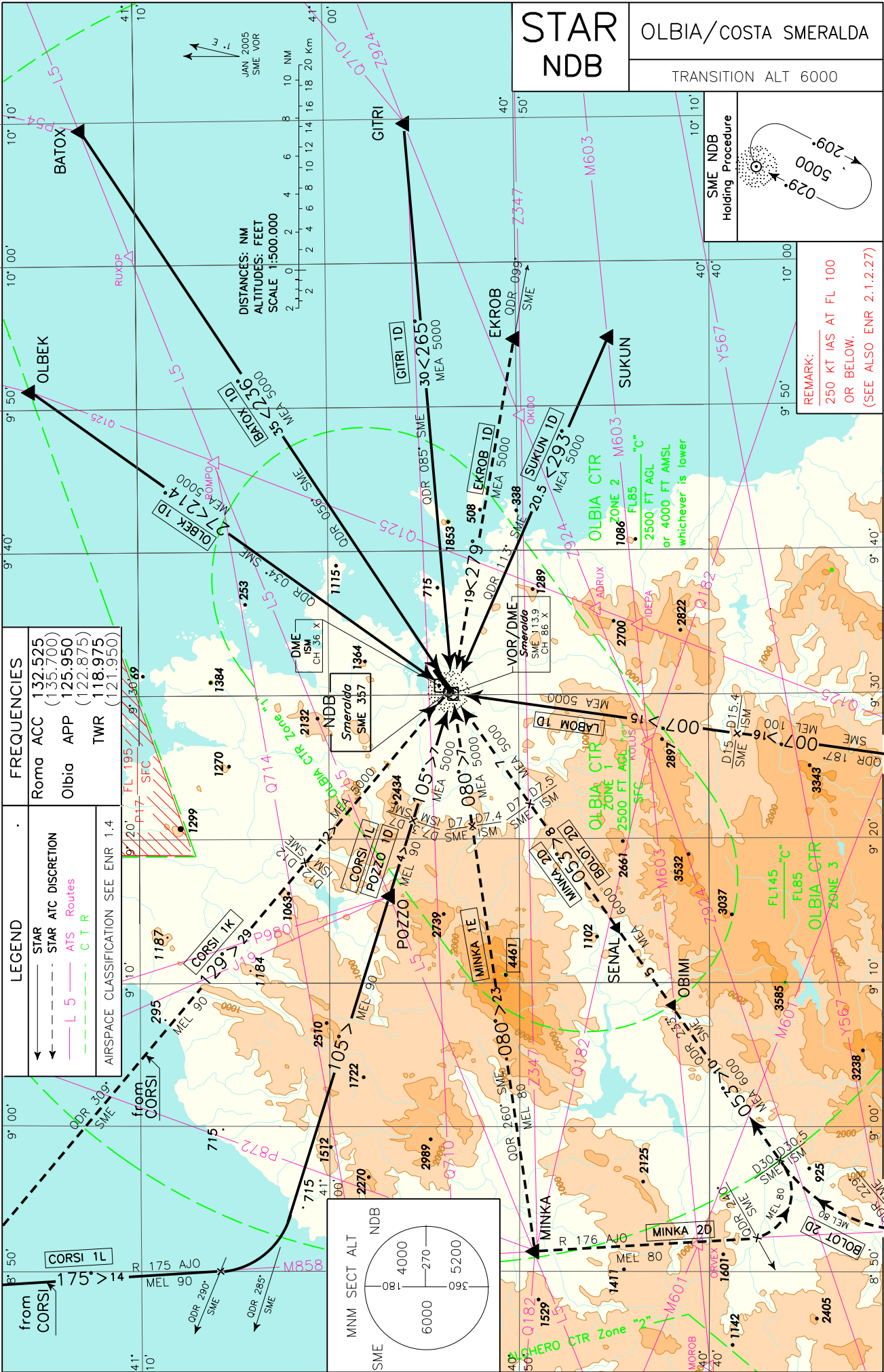
CORSI – TR 129° (RDL 309 SME VOR) – SME VOR/DME.

MEL/MEA: CORSI – RDL 309/12NM SME VOR/DME (o/or 12NM ISM DME): FL 90; RDL 309/12NM SME VOR/DME (o/or 12NM ISM DME) – SME VOR/DME: 5000 FT.

Intenzionalmente bianca

*Intentionally left blank*

CHANGE: STARS FROM "DEXIM" WITHDRAWN - NEW STARS CORSI1K/1L IMPLEMENTED

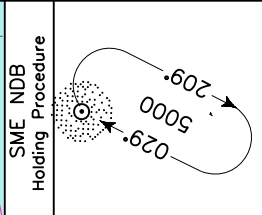
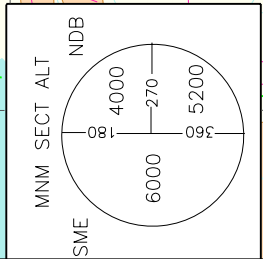


# STAR NDB

## OLBIA/COSTA SMERALDA

TRANSITION ALT 6000

LEGEND		FREQUENCIES	
→	STAR ATC DISCRETION	Roma ACC	132.525 (135.700)
→	STAR ATC DISCRETION	Olbia APP	125.950 (122.875)
→	ATS Routes	TWR	118.975 (121.950)
→	C.T.R	AIRSPACE CLASSIFICATION SEE ENR 1.4	



REMARK:  
 250 KT IAS AT FL 100  
 OR BELOW.  
 (SEE ALSO ENR 2.1.2.27)

**BATOX 1D**

BATOX – TR 236° (QDR 056° SME NDB) – SME NDB.

MEA: BATOX – SME NDB: 5000 FT.

**SUKUN 1D**

SUKUN – TR 293° (QDR 113° SME NDB) – SME NDB.

MEA: SUKUN – SME NDB: 5000 FT.

**LABOM 1D**

LABOM – TR 007° (QDR 187° SME NDB) – SME NDB.

MEL/MEA: LABOM – INT QDR 187° SME NDB/15NM SME DME (o/or 15.4NM ISM DME): FL 100; INT QDR 187° SME NDB/15NM SME DME (o/or 15.4NM ISM DME) – SME NDB: 5000 FT.

**BOLOT 2D (a discrezione ATC)**

BOLOT – TR 356° (RDL 176 AJO VOR) fino ad attraversare QDR 229° SME NDB, quindi virare a destra fino ad intercettare e seguire QDR 233° SME NDB (TR 053°) per il punto OBIMI, quindi procedere SENAL – SME NDB.

MEL/MEA: BOLOT – QDR 233° SME NDB/30NM SME DME (o/or 30.5NM ISM DME): FL 80; QDR 233° SME NDB/30NM SME DME (o/or 30.5NM ISM DME) – QDR 233° SME NDB/7NM SME DME (o/or 7.5NM ISM DME): 6000 FT; QDR 233° SME NDB/7NM SME DME (o/or 7.5NM ISM DME) – SME NDB: 5000 FT.

**MINKA 2D (a discrezione ATC)**

MINKA – TR 176° (RDL 176 AJO VOR) fino ad attraversare QDR 240° SME NDB, quindi virare a sinistra fino ad intercettare e seguire QDR 233° SME NDB (TR 053°) per il punto OBIMI, quindi procedere SENAL – SME NDB.

MEL/MEA: BOLOT – QDR 233° SME NDB/30NM SME DME (o/or 30.5NM ISM DME): FL 80; QDR 233° SME NDB/30NM SME DME (o/or 30.5NM ISM DME) – QDR 233° SME NDB/7NM SME DME (o/or 7.5NM ISM DME): 6000 FT; QDR 233° SME NDB/7NM SME DME (o/or 7.5NM ISM DME) – SME NDB: 5000 FT.

**MINKA 1E (a discrezione ATC)**

MINKA – TR 080° (QDR 260° SME NDB) – SME NDB.

MEL/MEA: MINKA – QDR 260° SME NDB/7NM SME DME (o/or 7.4NM ISM DME): FL 80; QDR 260° SME NDB/7NM SME DME (o/or 7.4NM ISM DME) – SME NDB: 5000 FT.

**POZZO 1D**

POZZO – TR 105° (QDR 285° SME NDB) – SME NDB.

MEL/MEA: POZZO – QDR 285° SME NDB/7NM SME DME (o/or 7.3NM ISM DME): FL 90; QDR 285° SME NDB/7NM SME DME (o/or 7.3NM ISM DME) – SME NDB: 5000 FT.

**OLBEK 1D**

OLBEK – TR 214° (QDR 034° SME NDB) – SME NDB.

MEA: OLBEK – SME NDB: 5000 FT.

**GITRI 1D**

GITRI – TR 265° (QDR 085° SME NDB) – SME NDB.

MEA: GITRI – SME NDB: 5000 FT.

**EKROB 1D (a discrezione ATC)**

EKROB – TR 279° (QDR 099° SME NDB) – SME NDB.

MEA: EKROB – SME NDB: 5000 FT.

**CORSI 1L**

CORSI – TR 175° (RDL 175 AJO VOR) fino ad intercettare QDR 290° SME NDB, quindi virare a sinistra fino ad intercettare e seguire QDR 285° SME NDB (TR 105°) per il punto POZZO, quindi SME NDB.

MEL/MEA: CORSI – QDR 285° SME NDB/7NM SME DME(o/or 7.3NM ISM DME): FL 90; QDR 285° SME NDB/7NM SME DME (o/or 7.3NM ISM DME) – SME NDB: 5000 FT.

**CORSI 1K (a discrezione ATC)**

CORSI – TR 129° (QDR 309° SME NDB) – SME NDB.

MEL/MEA: CORSI – QDR 309° SME NDB/12NM SME DME (o/or 12NM ISM DME): FL 90; QDR 309° SME NDB/12NM SME DME (o/or 12NM ISM DME) – SME NDB: 5000 FT.

**BATOX 1D**

BATOX – TR 236° (QDR 056° SME NDB) – SME NDB.

**SUKUN 1D**

SUKUN – TR 293° (QDR 113° SME NDB) – SME NDB.

**LABOM 1D**

LABOM – TR 007° (QDR 187° SME NDB) – SME NDB.

**BOLOT 2D (ATC discretion)**

BOLOT – TR 356° (RDL 176 AJO VOR) until crossing QDR 229° SME NDB, then turn right until joining QDR 233° SME NDB (TR 053°) bound to OBIMI, then proceed SENAL – SME NDB.

**MINKA 2D (ATC discretion)**

MINKA – TR 176° (RDL 176 AJO VOR) until crossing QDR 240° SME NDB, then turn left until joining QDR 233° SME NDB (TR 053°) bound to OBIMI, then proceed SENAL – SME NDB.

**MINKA 1E (ATC discretion)**

MINKA – TR 080° (QDR 260° SME NDB) – SME NDB.

**POZZO 1D**

POZZO – TR 105° (QDR 285° SME NDB) – SME NDB.

**OLBEK 1D**

OLBEK – TR 214° (QDR 034° SME NDB) – SME NDB.

**GITRI 1D**

GITRI – TR 265° (QDR 085° SME NDB) – SME NDB.

**EKROB 1D (ATC discretion)**

EKROB – TR 279° (QDR 099° SME NDB) – SME NDB.

**CORSI 1L**

CORSI – TR 175° (RDL 175 AJO VOR) until crossing QDR 290° SME NDB, then turn left until joining QDR 285° SME NDB (TR 105°) bound to POZZO, then SME NDB.

**CORSI 1K (ATC discretion)**

CORSI – TR 129° (QDR 309° SME NDB) – SME NDB.



Intenzionalmente bianca

*Intentionally left blank*